

# 3form profile tile

## Product Description

Profile is a collection of sophisticated tiles which bring impact to spaces with dramatic pattern, texture and color. This stunning 3 dimensional product is created with CNC machining and advanced thermoforming capabilities.

### FEATURES AND BENEFITS

- a variety standard patterns and material options available
- rich finishes available or finish onsite with primer and paint
- custom patterns and finishes available
- cost-effective decorative feature
- easy to specify, easy to install
- Standard Class B rating (Class A fire-rated available)

### AVAILABLE PATTERNS

Flank*	Glide	Quarry
Subway	Swoon	Verve

\*Flank is not available in concrete.

### AVAILABLE MATERIALS

Standard vinyl wrapped MDF - Various patterns and colors

Felt Wrapped - 30 colors available

Chroma

Wood\* - Baltic Birch or Poplar

\*Wood options are both plywood made from real wood veneers

### TILE SIZES AND TOLERANCES

TILE PATTERN	DIMENSIONS
Flank	3.5" x 15.75" (8.9 cm x 40 cm)
	3.5" x 23.38" (8.9 cm x 59.4 cm)
	3.5" x 31.50" (8.9 cm x 80 cm)
	3.5" x 47.25" (8.9 cm x 120 cm)
	3.5" x 71.13" (8.9 cm x 180.7 cm)
Glide	15.50" x 4.62" (39.4 cm x 11.7 cm)
Quarry	15.50" x 4.30" (39.4 cm x 8.9 cm)
Subway	15.50" x 3.50" (39.4 cm x 10.9 cm)
Swoon	8.66" x 5.00" (22.0 cm x 12.7 cm)
Verve	15.50" x 4.55" (39.4 cm x 11.56 cm)

All dimensions and squareness are subject to a 3/16" (4.7 mm) tolerance. Profile tiles can be up to 3/4" thick.

### SHEET YIELD

One 4' x 8' sheet yields the following quantities of tiles:

TILE PATTERN	YIELD QUANTITY	
Flank	4) - 15.75", (4) - 23.38", (4) - 31.5" (12) - 47.25", (4) - 71.13" (All 3.5" wide)	
Glide	57 Full Tiles, 24 Half Tiles	
Quarry	60 Full Tiles	48 Full Tiles, 20 Half Tiles
Subway	72 Full Tiles	57 Full Tiles, 25 Half Tiles
Swoon	160 Full Tiles	
Verve	63 Full Tiles, 24 Half Tiles	

## Specifications

### FLAMMABILITY & SMOKE TEST RESULTS - BUILDING CODE APPROVALS

Profile tiles have been independently tested and meet the criteria for approved interior finishes as described in the 2012 International Building Code\*.

MATERIAL TYPE	TEST - ASTM E84	DATA	RESULT
Chroma	Flame Spread Smoke generated	115 150	Class C: 76-150 <450
Standard MDF - Felt	Flame Spread Smoke generated	40 105	Class B: 26-75 <450
Standard MDF - Standard Finish	Flame Spread Smoke generated	40 400	Class B: 26-75 <450
Fire Rated MDF	Flame Spread Smoke generated	15 225	Class A: 0-25 <450
Wood - Baltic Birch	Flame Spread Smoke generated	70 165	Class B: 26-75 <450
Wood - Poplar	Flame Spread Smoke generated	40 135	Class B: 26-75 <450
Unfinished and ReadyToPaint	Not Tested		

### MDF FINISH OPTIONS

Standard Finish - 3form standard finish wrapping material is made from Polyvinyl Chloride (PVC).

ReadyToPaint - 3form sands and primes the panels, which are then ready to paint in the field

Unfinished - Panels are delivered as carved MDF to be finished (prime and paint) in the field. 3form recommends using water-based paints.

### ALL OTHER FINISH OPTIONS

Felt - Made from 100% Merino Wool Felt

Standard Wood Finish - sanded and finished with clear matte lacquer.

### TILE WEIGHT

TILE PATTERN	WRAPPED MDF	BALTIC BIRCH	POPLAR
Flank	Various	Various	Various
Glide	0.6 lb (0.27 kg)	0.5 lb (0.25 kg)	0.4 lb (0.18 kg)
Quarry	0.8 lb (0.36 kg)	0.7 lb (0.33 kg)	0.5 lb (0.24 kg)
Subway	0.6 lb (0.27 kg)	0.5 lb (0.25 kg)	0.4 lb (0.18 kg)
Swoon	0.2 lb (0.09 kg)	0.2 lb (0.08 kg)	0.1 lb (0.06 kg)
Verve	0.6 lb (0.27 kg)	0.5 lb (0.25 kg)	0.4 lb (0.18 kg)

**EXPANSION/CONTRACTION ALLOWANCES**

Like all natural products, 3form Profile tiles will expand and contract nominally with fluctuations in moisture content. Wood products have a possible linear expansion of +/- 0.33%. Panels will swell (grow) in high humidity and shrink in low humidity applications. It is recommended that the panels be installed in a controlled environment where the humidity is maintained at 25-55% relative humidity. Humidity below 20% or above 80% can cause problems.

**FLATNESS TOLERANCE**

Natural bow or warp is common to all wood and concrete products. This can be compensated for by proper installation techniques.

**COLOR CONSISTENCY**

Unwrapped Profile panels will NOT have color consistency from panel to panel as they are made using recycled/recovered forest products. Panels WILL have consistent color when specifying a film wrapped Profile panel.

Concrete, by nature, will have natural color variation from piece to piece dependent on size and shape of each tile and exact environmental conditions occurring during each piece's cure period. Slight modulations within the piece can be expected, this is what gives concrete its unique beauty and will ensure a natural, organic aesthetic

**IN-FIELD PAINTING PROCESS**

Sand and prime the panel until it is ready to be painted. This may take more than one round of prime/paint. For ReadyToPaint, 3form Fabrication uses the following steps (which can easily be replicated in the field):

- 1. Sand MDF using Norton Contour Sponge medium grit (part #2257 NCSSM)
- 2. Remove dust using an air blower
- 3. Apply Valspar White Vinyl (part #VUW2000) to 4 ml using an airless sprayer
- 4. Dry for 25 minutes
- 5. Sand the applied white vinyl using Norton Contour Sponge fine grit (part #2256 NCSSF)
- 6. Remove dust using air blower and tac rag
- 7. Apply Valspar White Vinyl (part #VUW2000) to 4 ml using an airless sprayer
- 8. Dry for 25 minutes
- 9. The product is now ready to be painted in the field (this service is not provided by 3form)
- 3form recommends a water-based paint (ie latex), though some solvent-based paint (ie. lacquer) could also work with this process.

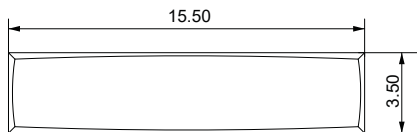
**MDF and Wood Installation Instructions**

There are a variety of possible ways of installing 3form profile tiles. 3form recommends using VHB Tape for installation of all non-concrete tiles.

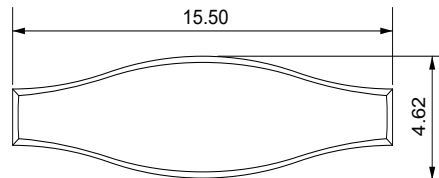
**VHB TAPE**

Use 3M VHB tape to secure Profile Tiles to the wall. 3form recommends the use of 3M VHB 4496 which is a white foam double sided tape with permanent adhesive. Full cure time for VHB is 72 hours. Alignment of the panels prior to curing is important as the panels may not be re-aligned after curing.

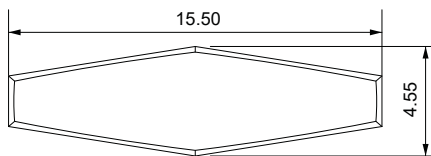
**PROFILE TILE DETAILED DRAWINGS**



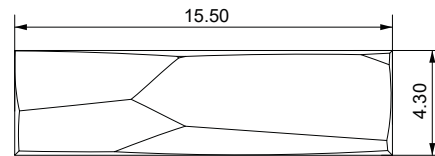
SUBWAY



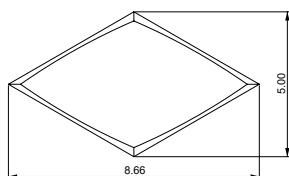
GLIDE



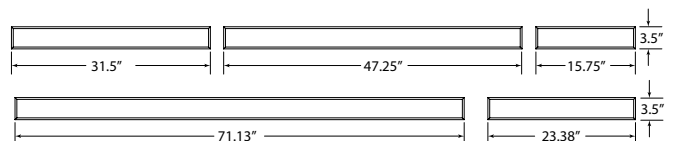
VERVE



QUARRY



SWOON



FLANK

## Cleaning Instructions (Felt Only)

Wool can be cleaned by vacuuming or by gently brushing by hand. Please note that slight shedding of fibers is normal and not indicative of any defect. These loosened fibers are easily vacuumed away and will decrease over time.

If a wet spill should occur, blot to absorb the liquid quickly and avoid absorption. Soiled areas may be cleaned with warm water or a mild dry cleaning solvent. Avoid aggressive rubbing as this can continue the felting process and change the surface appearance of that area.

## Cleaning Instructions

3form Profile tiles should be cleaned periodically. A regular, seasonal cleaning program will help prevent dirt build-up. 3form recommends the use of the following common cleaning products: Windex, Formula 409, Simple Green, Fantastik, Virex, 10:1 Water/Bleach Solution.

Rinse the sheets with lukewarm water. Remove dust and dirt from Profile tiles with a soft cloth or sponge and a solution of mild soap and/or liquid detergent in water. A 50:50 solution of isopropyl alcohol and water also works well. Rinse thoroughly with lukewarm water.

Always use a soft, damp cloth to blot dry. Rubbing with a dry cloth can scratch the material and create a static charge. Never use scrapers or squeegees on Profile tiles. Also avoid scouring compounds, gasoline, benzene, acetone, carbon tetrachloride, certain deicing fluids, lacquer thinner or other strong solvents.

### DO:

- Apply cleaning solution or water to a clean cloth and wipe resin clean

### DO NOT:

- Use strong solvents, highly alkaline or abrasive cleaning agents.
- Clean in hot sun or at elevated temperatures.
- Rub with a dry cloth.
- Do not completely saturate panel with cleaning solution or water

## Chemical Resistance of 3form Profile (Standard Finish) to Select Disinfectants

### 7 DAY FULL IMMERSION TESTING @ 73°F (23°C)

Polymer materials are affected by chemicals in different ways. Changes in performance or appearance can be attributed to fabrication methods, exposure conditions, concentration of chemical substances or exposure duration. Such factors can even influence the final effect of substances that 3form Profile Tile is considered "Resistant" to under test conditions. Further details are explained below:

### APPLICATION OF CHEMICALS

Application from contact, rubbing, wiping, spraying, soaking, etc. Also having an affect is the relative concentration of the chemical in question.

The following data is based on complete immersion of the standard finish PVC wrap in the chemical or reagent shown. Samples remained immersed and were stored at 73°F (23°C) for a period of 7 days. Following the test period the samples were removed from immersion and inspected.

The following table provides indicative performance of the chemical resistance characteristics of the standard profile finish. The following codes are used to describe the chemical resistance characteristics:

### R = RESISTANT

3form Profile is able to withstand the identified compound for long exposure periods (7 days, full immersion)

### LR = LIMITED RESISTANCE

3form Profile is only resistant when in contact with this compound for short periods at room temperature. It is advised that further determination of the effect of the substance be further tested in your particular application.

### NR = NOT RESISTANT

3form Profile is not resistant to the compound. The material will swell, craze, haze, dissolve or experience some physical change when exposed to this substance.

### DISINFECTANTS\*

REAGENT	RESULT
ChemiSwiss SUIclean™	R
ClearSpace powered by PreventX™	R
Clorox Healthcare® Bleach Germicidal Wipes	R
Clorox Healthcare® Hydrogen Peroxide Cleaner Disinfectant Wipes	R
Clorox Healthcare® VersaSure™ Alcohol-Free Disinfectant Cleaner Wipes	R
Diversey™ Avert® Disinfectant Cleaner	R
Diversey™ Oxivir® TB Hospital Grade Disinfectant	R
Diversey™ Virex® Cleaner Disinfectant TB	R
Diversey™ Virex® II 256 One Step Disinfectant Cleaner and Deodorant	R
Ecolab® Neutral Disinfectant Cleaner	R
Ecolab® Oxycide Daily Disinfectant Cleaner	R
Ecolab® Quaternary Disinfectant Cleaner	R
PDI® Sani-Cloth® AF3 Germicidal Disposable Wipe	R
PDI® Sani-Cloth® Bleach Germicidal Disposable Wipe	R
PDI® Sani-Cloth® Plus Germicidal Disposable Cloth	R
PDI® Sani-Cloth® Prime Germicidal Disposable Wipe	R
PDI® Super Sani-Cloth® Germicidal Disposable Wipe	R

\*Use recommended cleaners and disinfectant products as directed by the manufacturers